

PLACE
CENTRAL



beautiful on the outside...

Luxurious 2 & 3 Bedroom
Apartments (some duplex
versions) at Central Place,
Station Road, Wilmslow

CENTRAL PLACE



...relaxing on the inside

Wilmslow is a very 'upmarket' small town catering for a sophisticated population. It serves as a dormitory town for Manchester and from that point of view, Central Place is only a gentle stroll from Wilmslow Station. Shopping-wise, Central Place is situated at the heart of the town and there is everything that you are ever likely to need right here on your doorstep - from high quality individually owned shops to nationally branded supermarkets.

Maro Developments has unveiled its latest collection of 2 & 3 bedroom apartments at this landmark development, to coincide with the opening of their new show apartment illustrated here.

First impressions count and on arriving at the entrance hall there is a very attractive foyer with a lift to all floors. Leading off the hallway provision has been made for storage rooms for each apartment.

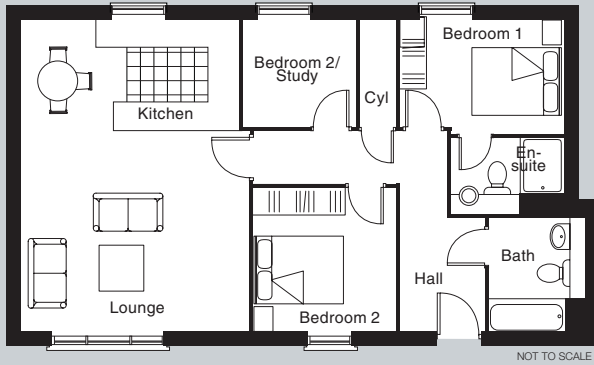
All the common areas are tastefully carpeted.

This latest showhome is undoubtedly one of the most sumptuous to be seen in the Greater Manchester area. The interiors reflect Maro's talent for creating cool, calm environments with an unerring eye for detail.

Central Place is for people who are looking for exclusivity.

For further information please call 0845 402 8382 or visit our Show Apartment Open Weekends 12noon - 4pm and by appointment at other times.

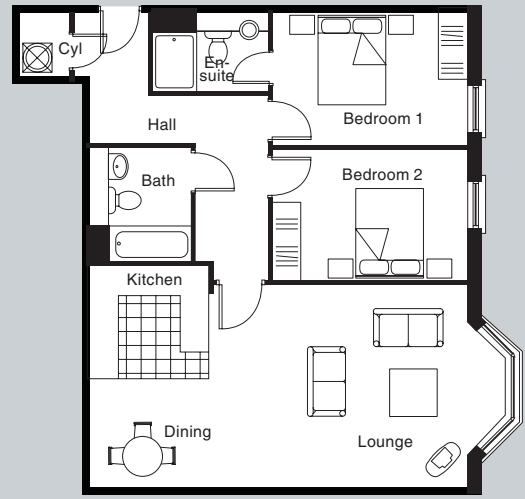




NOT TO SCALE

APARTMENT 25

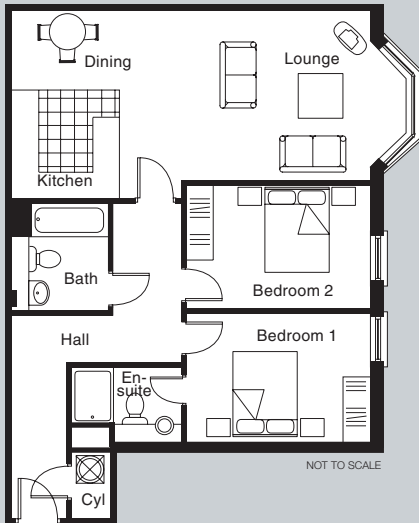
Three Bedroom Apartment
Second Floor - 1000 sq ft



NOT TO SCALE

APARTMENT 27

Two Bedroom Apartment
Second Floor - 893 sq ft



NOT TO SCALE

APARTMENT 39

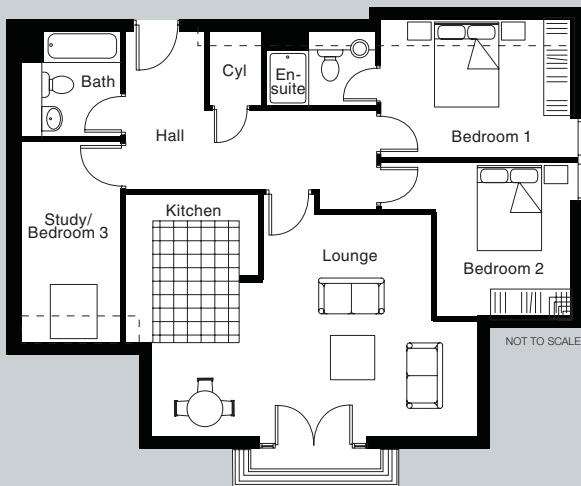
Two Bedroom Apartment
First Floor - 857 sq ft



NOT TO SCALE

APARTMENT 41

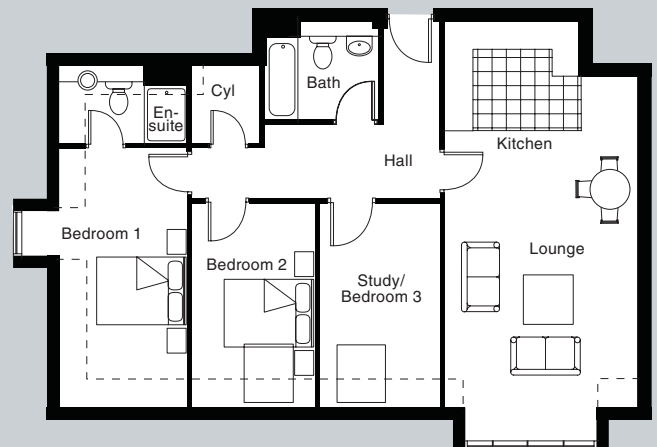
Two Bedroom Apartment
First Floor - 982 sq ft



NOT TO SCALE

APARTMENT 50

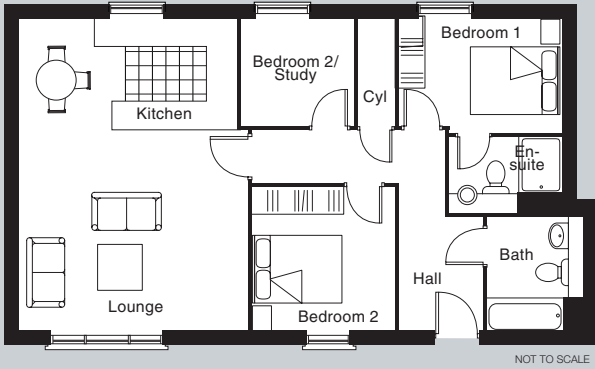
Three Bedroom Apartment
Third Floor - 1045 sq ft



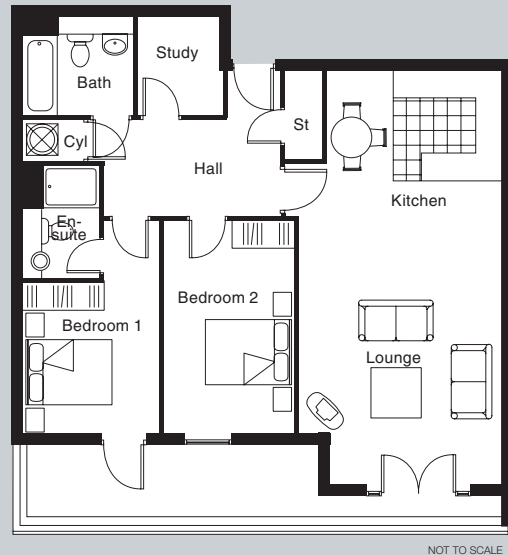
NOT TO SCALE

APARTMENT 51

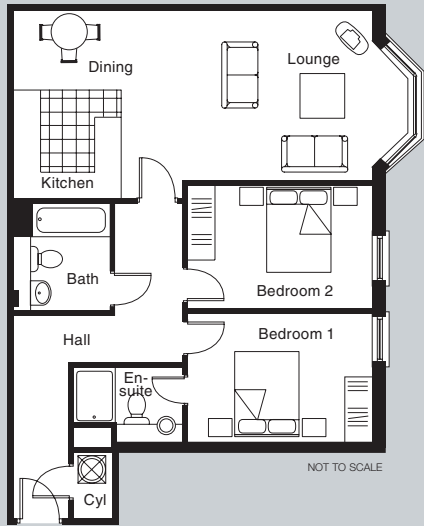
Three Bedroom Apartment
Third Floor - 1041 sq ft



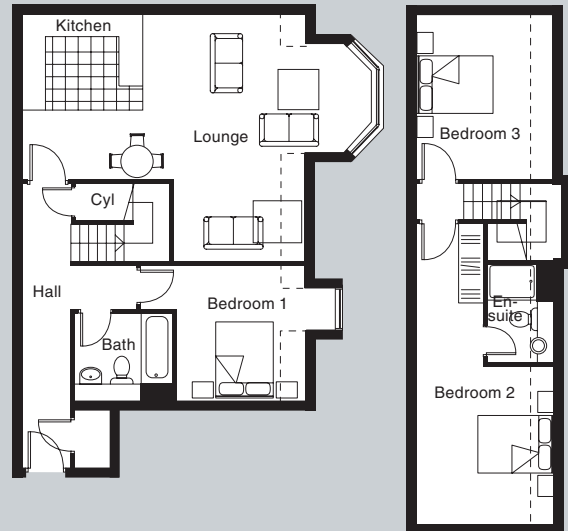
APARTMENT 29
Three Bedroom Apartment
 Third Floor - 1000 sq ft



APARTMENT 36
Two Bedroom Apartment
 Ground Floor - 982 sq ft

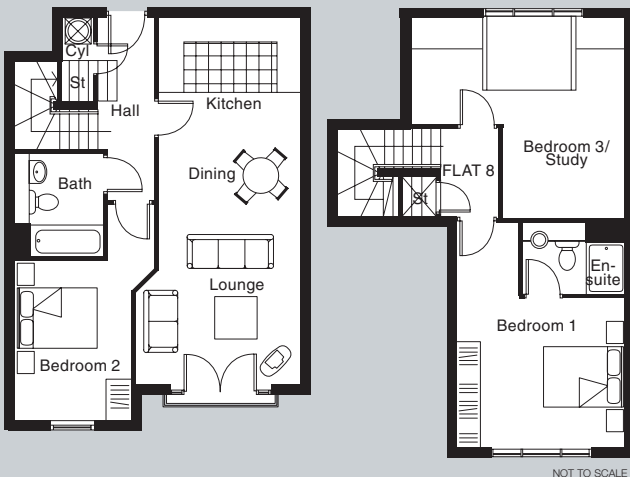


APARTMENT 44
Two Bedroom Apartment
 Second Floor - 857 sq ft

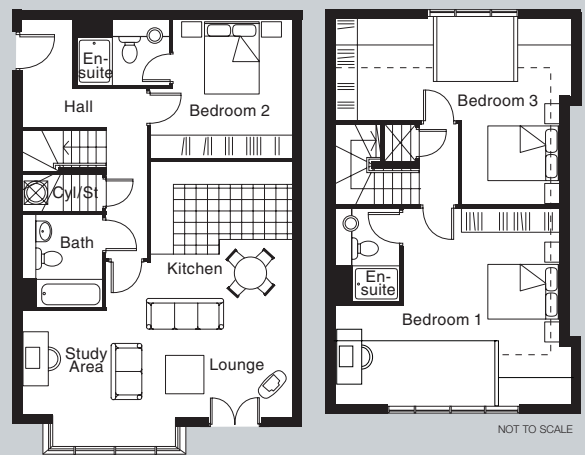


APARTMENT 49
Three Bedroom Apartment
 Third/Fourth Floor - 1281 sq ft

north block



APARTMENT 59
Three Bedroom Apartment
 Third/Fourth Floor - 1136 sq ft



APARTMENT 60
Three Bedroom Apartment
 Third/Fourth Floor - 1410 sq ft



luxurious specification

SECURITY

Security shutters to undercroft parking areas. Video entry system to all apartments.

HEATING

Ergonomically designed individually controlled Economy 7 wall panels to living rooms.
Heated towel rail to bathroom.

WINDOWS

Double-glazed to improve noise reduction and heat insulation.

KITCHENS

State-of-the-art wall and floor cabinets, including stainless steel appliances by Bosch.

LIVING ROOMS

High quality carpeting to main living rooms and bedrooms.

BATHROOMS

White ceramic suites to main bathrooms and en-suites, with ceramic floor and wall tiles and stainless steel fittings.

PAINTWORK

Plastered walls will receive matt emulsion magnolia paintwork. Ceilings white emulsion.

ELECTRICAL

Satellite TV points and telephone points to lounge and master bedroom.

WARRANTY

All homes carry the NHBC "Build Mark" 10 Year Warranty.





Maro Developments Ltd
Lower Meadow Road, Brooke Park, Wilmslow, Cheshire SK9 3LP
Tel: 0845 402 8382 (low call rate) www.marodev.co.uk

The particulars contained in this brochure are believed to be correct but cannot be guaranteed.
All liability in negligence or otherwise, for any loss arising from the use of these particulars is hereby excluded.

Designed and produced by Stratford Marketing Limited of Lichfield Tel: 01543 263942